

EI011.01

**Size**  
54,000 SF

**Construction Cost**  
\$12,600,000

**Completion**  
2016

**Location**  
Panama City, FL

**Type**  
Interiors

This addition to one of the oldest courthouses in the state of Florida provides much-needed space for a busy circuit court. With more than 14,000 criminal, civil and traffic cases processed annually, the judge’s caseloads far outweighed the capacity of the three original courtrooms, and caused overcrowding in the county jail as people awaited trial or disposition of their cases.

The new space now provides 6 new courtrooms, judges’ chambers, hearing rooms, and support spaces for both the public and court personnel. The project was carefully phased to allow construction to occur without affecting the ongoing operation of existing buildings, emergency exits, and inmate delivery systems.

The interior design sought to create a warm and inviting space while still honoring the stateliness of the court itself. Floor to ceiling windows bring natural light into the entry concourse and into the courtrooms themselves, and provide views to the serene bayou outside. Wide corridors and open spaces, combined with a contemporary design featuring neutral tones and rich materials, help to convey a welcoming and calming atmosphere.

## EI011.02

The original, historic courthouse for this circuit court only had three courtrooms, and the judges' caseloads far outweighed their capacity. The county jail was also overloaded, with most awaiting trial or disposition.

The new courtrooms provided by this expansion allow the court to process cases more quickly and save money previously spent in housing people in jail longer than necessary.





## EI011.03

By orienting the longest façade to the east, the building enjoys maximum light potential and panoramic views of the bayou.

An elevated, enclosed and environmentally controlled connection links the addition to the existing courthouse and to the sally port.





## EI011.04

The 54,000 SF addition includes 6 courtrooms and 7 judges' chambers and hearing rooms, public spaces and court support spaces, all built over a secure parking for judges and staff as well as mechanical level.

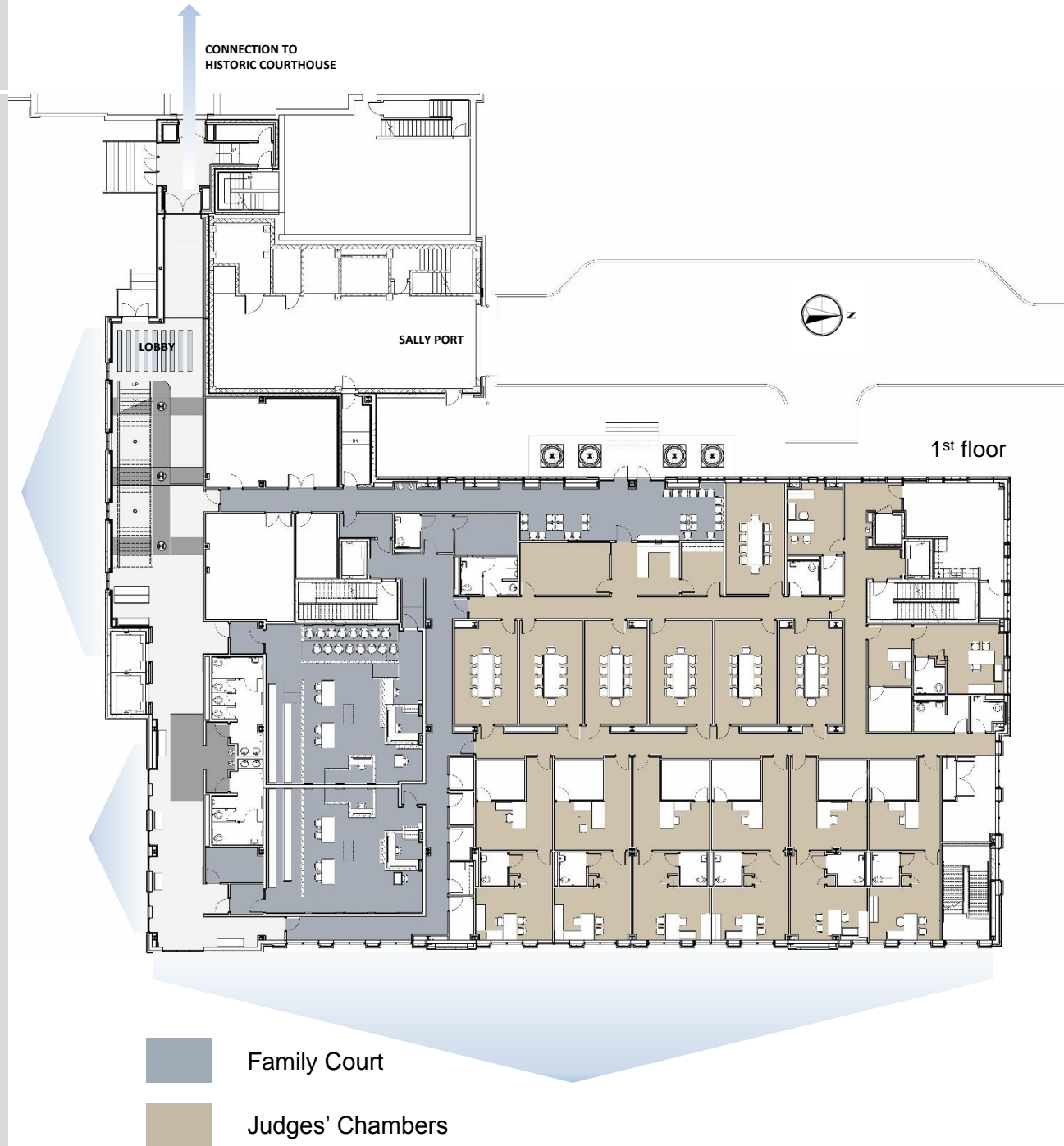
The longest façade captures natural light through the use of glazing and provides views to the landscape outside for the visitors and judges. Large courtrooms were located on the top floor to maximize ceiling heights.



# EI011.05

## First Floor

The first floor contains the smaller family courtrooms, the judges' chambers and support spaces. All of these are physically isolated from the criminal cases and sally port on the next level, to provide an extra layer of protection for family cases and support staff.



View of Bayou

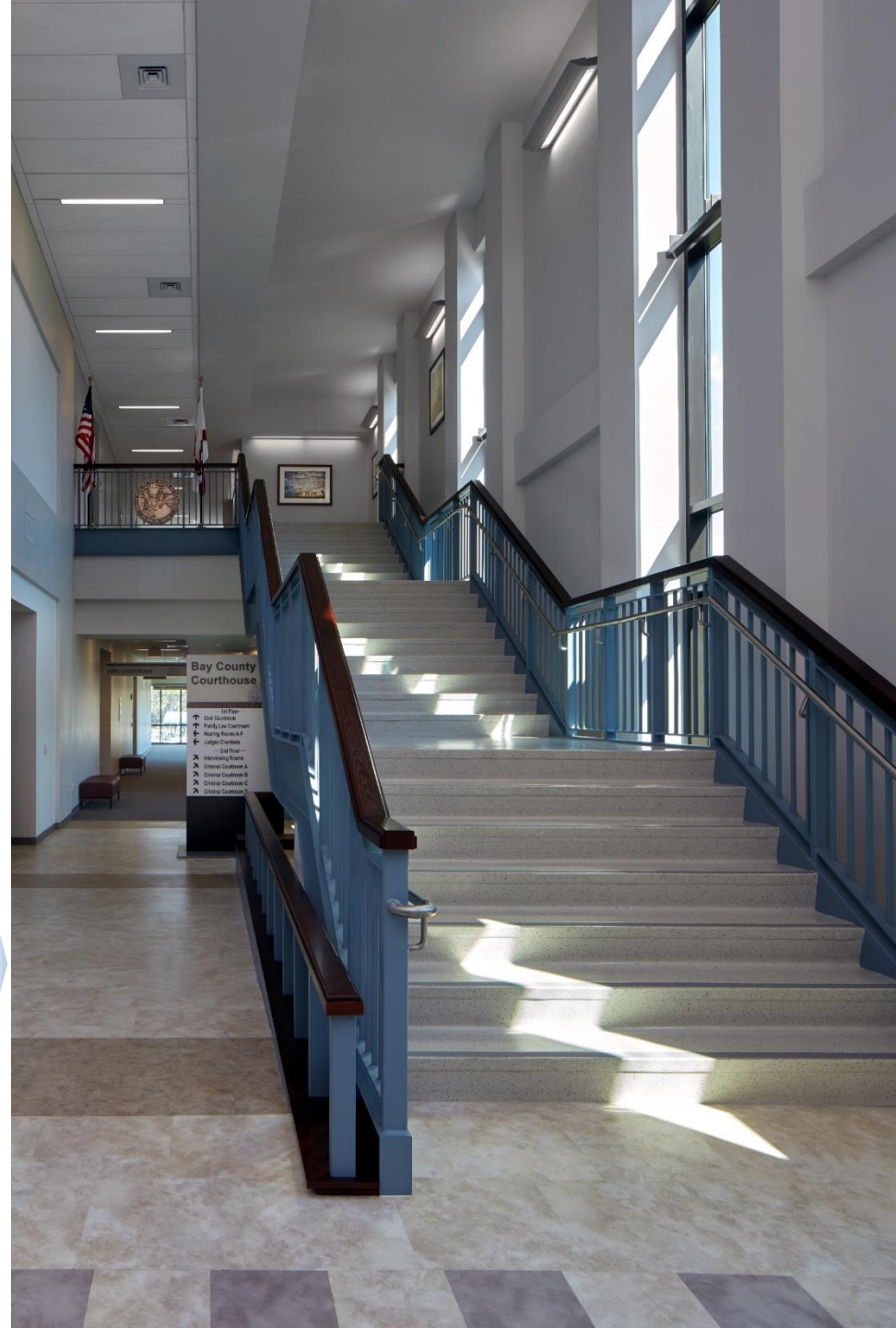
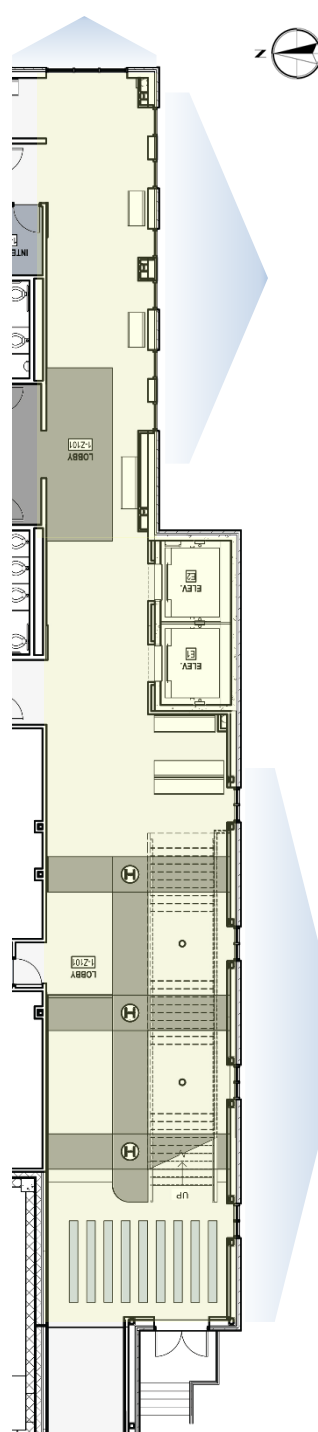


## EI011.06

A wide stairway with several landings encourages court visitors to bypass elevators and provides a focal point in the main concourse.

Floor-to-ceiling windows along the cascading staircase frame vistas of the bayou waters beyond.

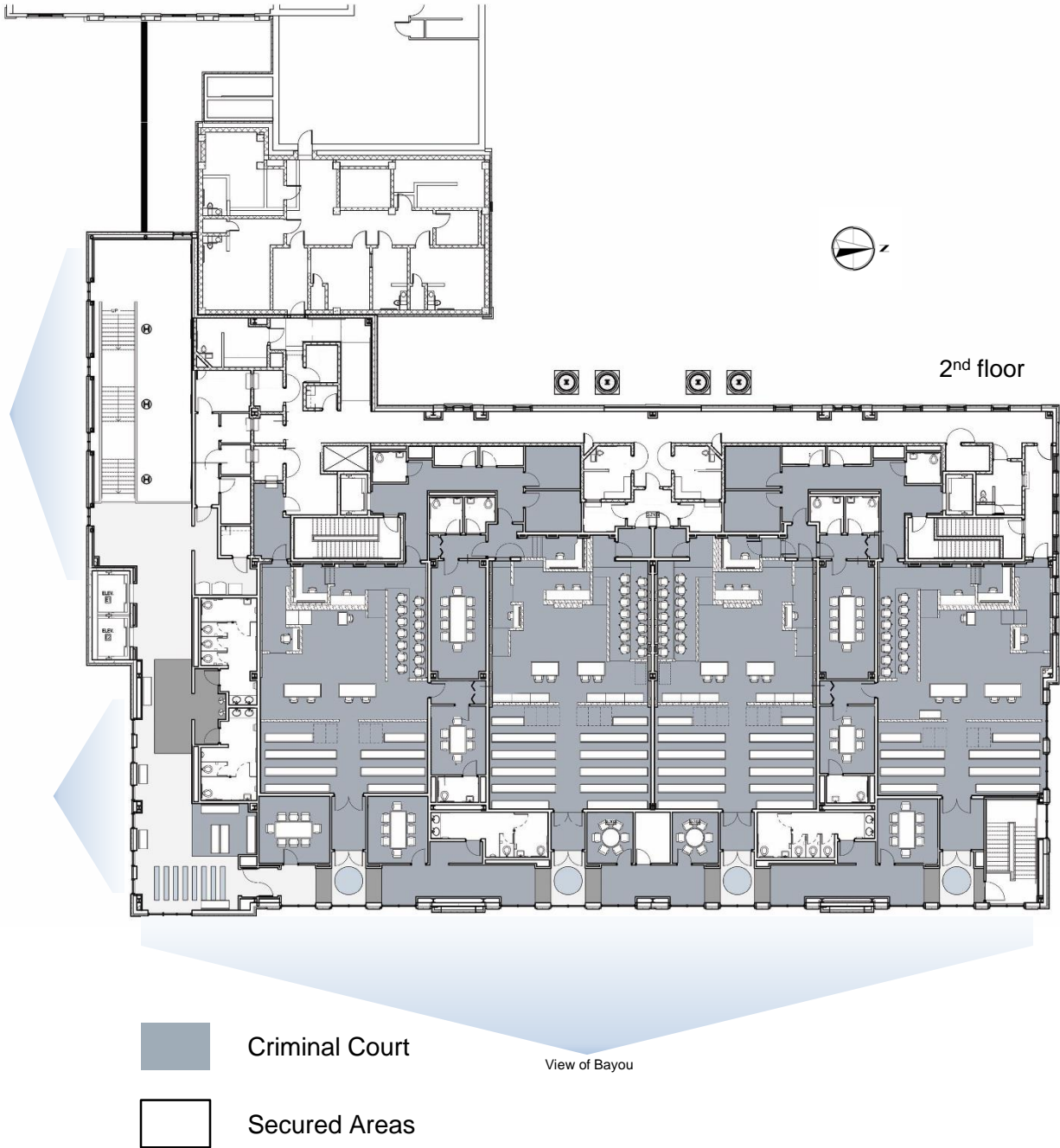
View of Bayou



# EI011.07

## Second Floor

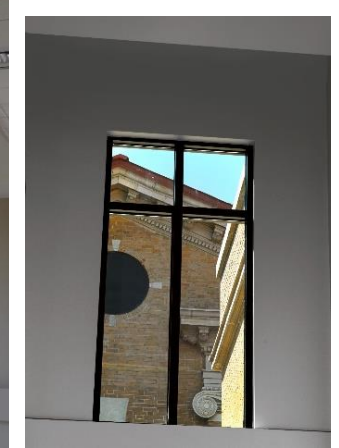
The design of the second floor allows an efficient passage of prisoners from the sallyport to the courtrooms, isolating them from the public.



## EI011.08

Floor to ceiling glazing enhances the courthouse's setting along a beautiful bayou, creating a connection to the landscape and providing natural light to the monumental staircase.

A window framing the historic façade of the original courthouse ties the new and old together within the space.



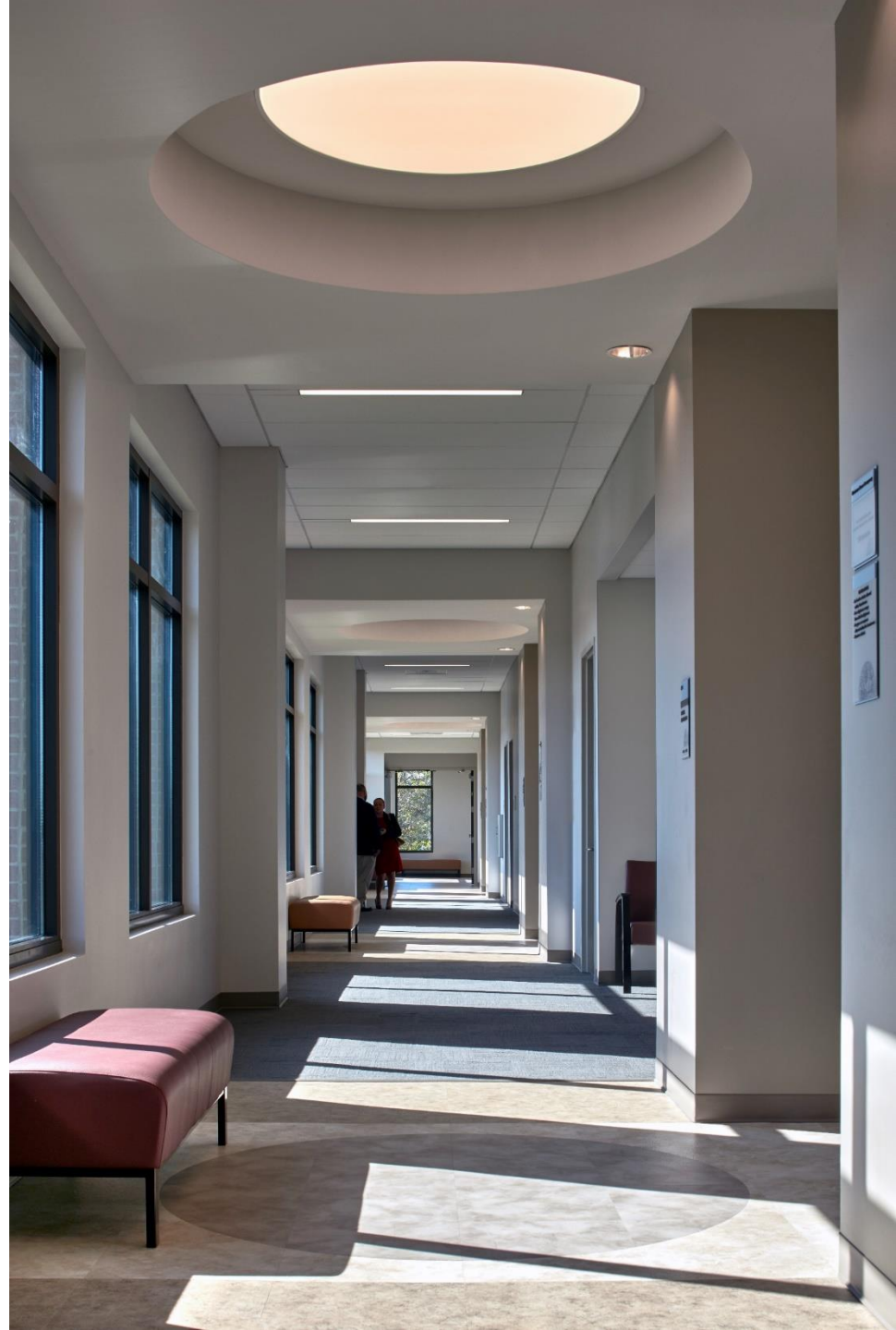
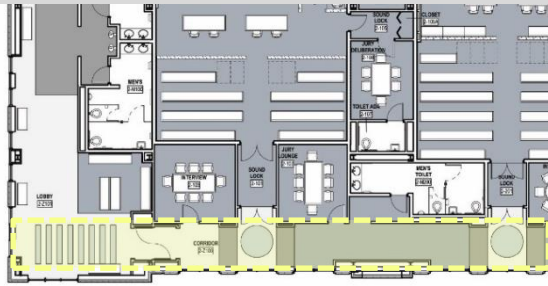
Portal to the Past



## EI011.09

Because courthouses are inherently intimidating spaces, the design creates a more open and inviting environment. The use of natural light, wider corridors, and more open spaces, coupled with contemporary design, helps portray a more welcoming and calming atmosphere.

This north-south corridor provides ideal natural lighting from the east. The overhead oculi features create focal elements that drive the user down the corridor and mark the transitions along the hallway.



**EI011.10**

Small Courtroom





**EI011.11**

Main Courtroom

