

M010.01

Project Total Square Footage:
14,700 SF

Cost per Square Foot:
\$232/SF

Construction Cost:
\$3,415,000

Date of Substantial Completion:
SEPT 2016

Location of Project:
MIRAMAR BEACH, FL

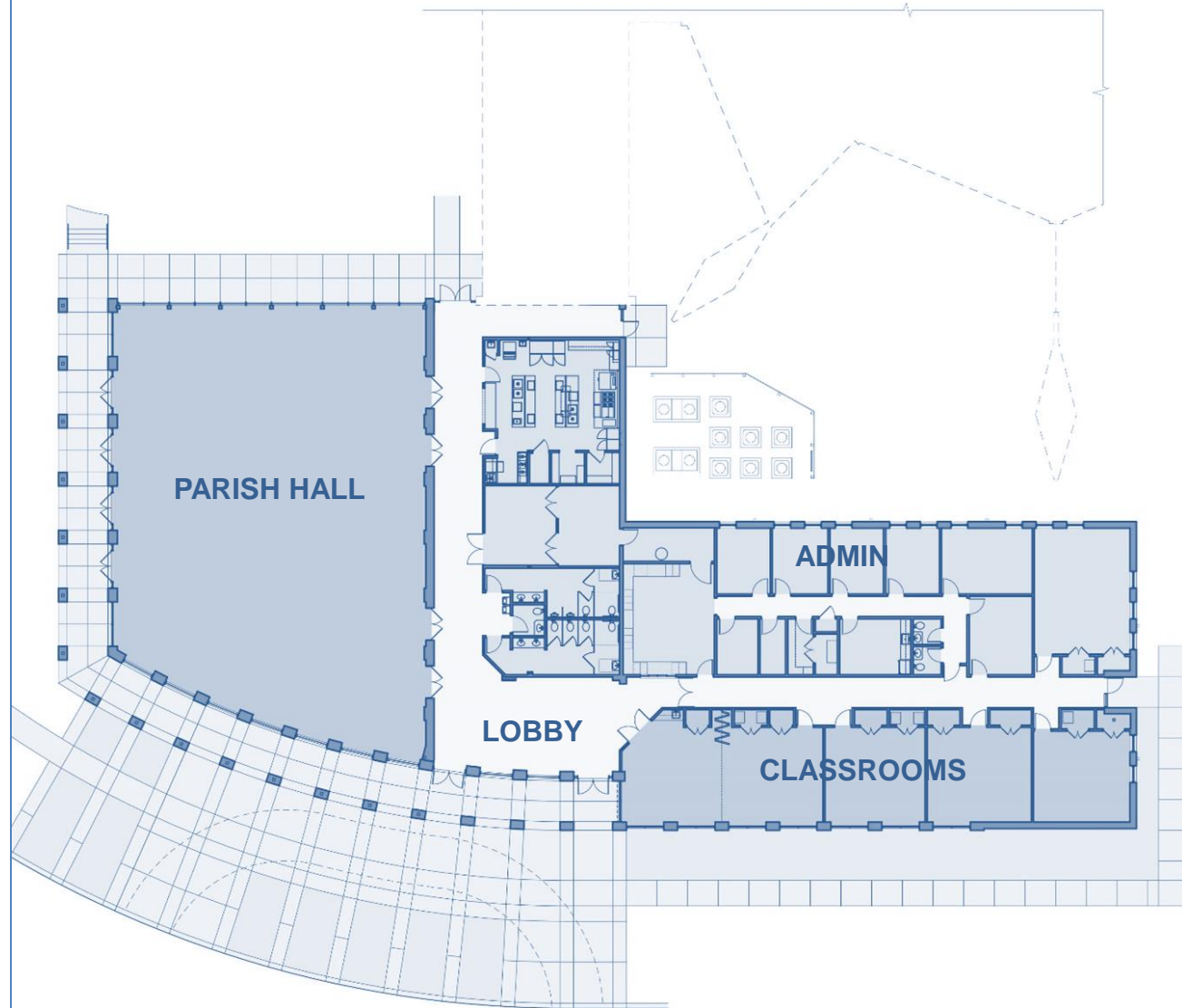
Type:
MASONRY

THIS PROJECT IS AN ADDITION TO AN EXISTING 600 SEAT CHURCH IN A BEACH COMMUNITY IN THE PANHANDLE IN FLORIDA. A NEW PARISH HALL IS CREATED TO ACCOMMODATE UP TO 300 PERSONS. THIS MULTI-PURPOSE ROOM, SURROUNDED ON THREE SIDES WITH GLASS WALLS AND BRICK COLUMNS, OPENS ITSELF TO THE NATURAL LANDSCAPING BEYOND.

A CURVED MASONRY PORTICO DEFINES THE MAIN ENTRY. ARCHITECTURAL FEATURES INCLUDE BRICK ARCADES ON THE SOUTH AND WEST SHIELDING THE HARSH SUN. THE BRICK COLOR AND WOOD BEAMS RESPOND TO THE EXISTING CHURCH, SEAMLESSLY BLENDING THE TWO.

M010.02

A TRANSITION BETWEEN THE INTERIOR AND EXTERIOR, THE BRICK ARCADES PROVIDE PROTECTION FROM THE RAIN AND HARSH SUNLIGHT AT THE SOUTH AND WEST ELEVATIONS.



M010.03



M010.04

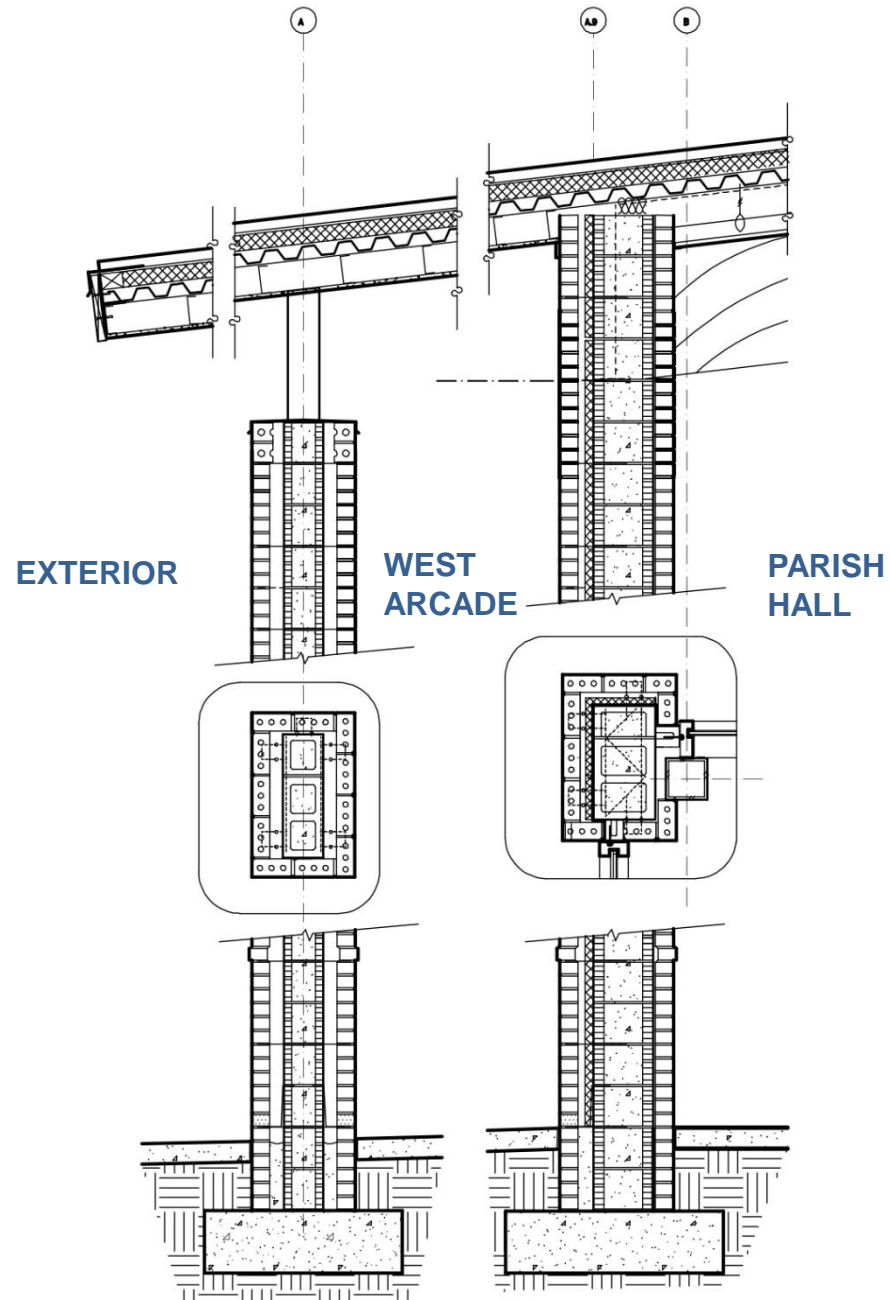


M010.05



M010.06

GENERAL SHALE'S MODULAR
SIZE "SILVERSTONE VELOUR" IS
BOTH THE INTERIOR AND
EXTERIOR WALL FINISH.



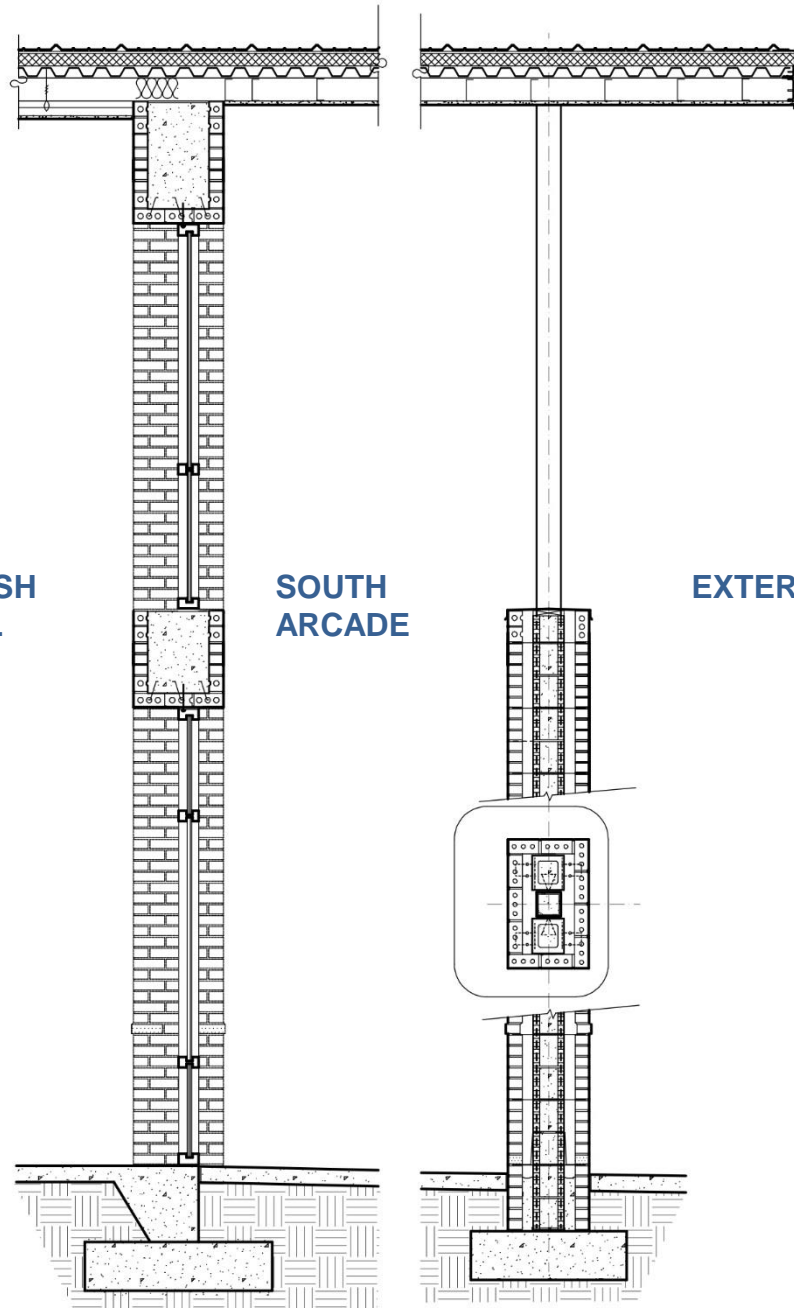
M010.07

BRICK VENEER PROVIDED THE
FORMWORK FOR THE POURED-
IN-PLACE CONCRETE LINTELS
OVER THE ARCADE AND GLASS
OPENINGS

PARISH
HALL

SOUTH
ARCADE

EXTERIOR



M010.08



M010.9

A ROCKFACE BAND ACCENTS
THE SMOOTH WALL



M010.10



M010.11



M010.12



M010.13

